



Pune District Education Association's
Annasaheb Magar Mahavidyalaya
Hadapsar, Pune- 411028
Affiliated to Savitribai Phule Pune University, Pune



Metric 7.1.3 (QnM) Facilities for management of degradable and non biodegradable waste

Index

Sr. No.	Particular	Page No.
a	Solid (Biodegradable) Waste Management	
i	Solid wet waste and dry waste sorting bins	5-6
ii	Separated bins for paper, Plastic, waste collection	7-8
iii	Preparation of Vermi-compost in college campus	9-11
iv	Use of Vermi compost to garden plants	12-12
b	Liquid waste management	
i	Installation of Effluent Treatment Plant	13-13
c	Plastic waste management	
i	Plastic awareness banners are placed in the campus.	14-15
ii	Separate plastic bins are placed in the campus.	16-16



Pune District Education Association's
Annasaheb Magar Mahavidyalaya
Hadapsar, Pune- 411028
Affiliated to Savitribai Phule Pune University, Pune



Metric 7.1.2 (QnM) Geo-tagged photographs of the facilities Index

Sr. No.	Particular	Page No.
d	E- waste Management	
i	E-Waste bins are placed in college campus	17-17
ii	E- Waste collected from staff and students	18-19
e	Biomedical waste management	
i	Installation of sanitary napkin wending machine in college	21-22
ii	Installation of sanitary napkin destroyer machine in college	23-24
iii	Installation of sanitary napkin wending machine in college ladies hostel	25-25
iv	Use of autoclave for decontaminating the microbial waste	26-28

Solid waste management

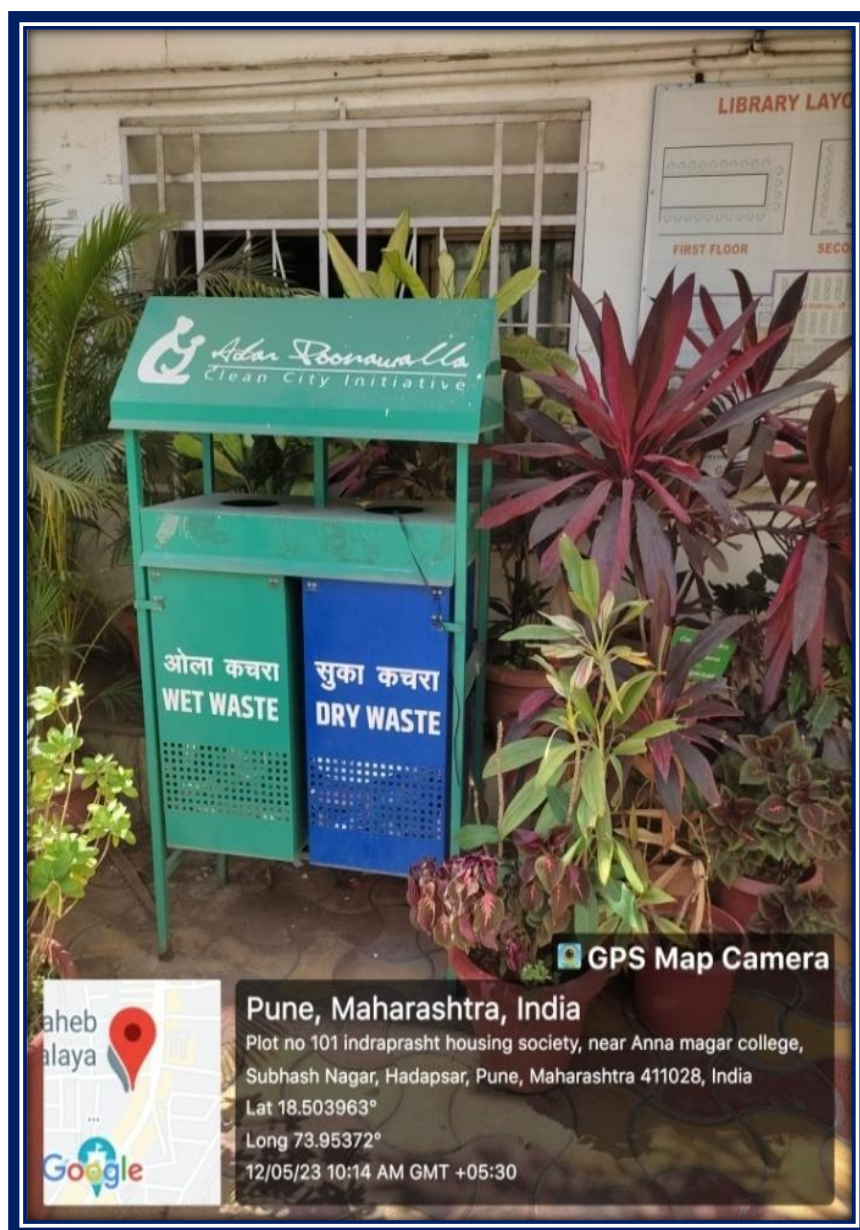
Sr. No.	Particulars
1.	Solid wet waste and dry waste sorting bins
2.	Separated bins for paper, Plastic, waste collection
3.	Preparation of Vermi-compost in college campus
4.	Use of Vermi compost to garden plants
5.	Available Excess Vermi- compost made to stakeholders



Pune District Education Association's
Annasaheb Magar Mahavidyalaya
Hadapsar, Pune- 411028
Affiliated to Savitribai Phule Pune University, Pune



Solid wet waste and dry waste sorting bins





Pune District Education Association's
Annasaheb Magar Mahavidyalaya
Hadapsar, Pune- 411028
Affiliated to Savitribai Phule Pune University, Pune



Solid wet waste and dry waste sorting bins





Pune District Education Association's
Annasaheb Magar Mahavidyalaya
Hadapsar, Pune- 411028
Affiliated to Savitribai Phule Pune University, Pune



Separated bins for paper, Plastic waste collection

Plastic Dustbin





Pune District Education Association's
Annasaheb Magar Mahavidyalaya
Hadapsar, Pune- 411028
Affiliated to Savitribai Phule Pune University, Pune



Separated bins for paper, Plastic waste collection

Paper Dustbin





Pune District Education Association's
Annasaheb Magar Mahavidyalaya
Hadapsar, Pune- 411028
Affiliated to Savitribai Phule Pune University, Pune



Preparation of Vermi-compost in college campus

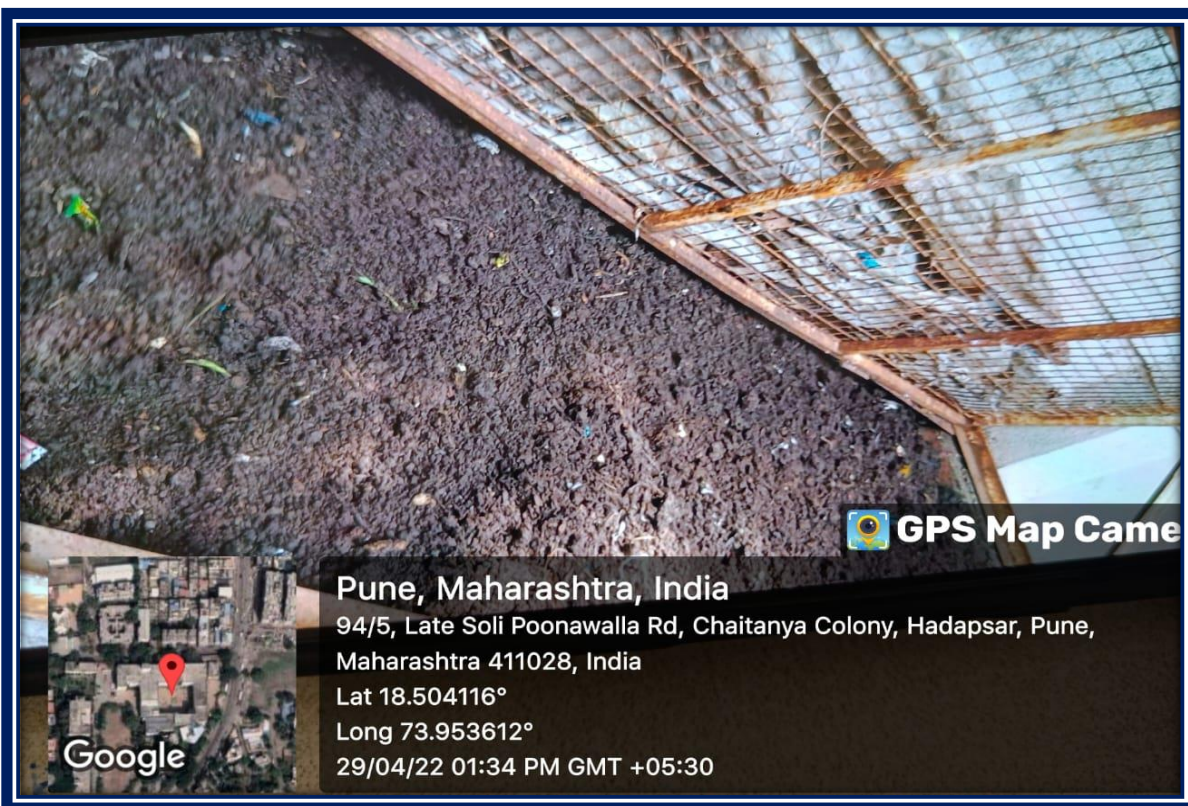




Pune District Education Association's
Annasaheb Magar Mahavidyalaya
Hadapsar, Pune- 411028
Affiliated to Savitribai Phule Pune University, Pune



Preparation of Vermi-compost in college campus





Pune District Education Association's
Annasaheb Magar Mahavidyalaya
Hadapsar, Pune- 411028
Affiliated to Savitribai Phule Pune University, Pune



Preparation of Vermi-compost in college campus





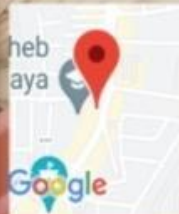
Pune District Education Association's
Annasaheb Magar Mahavidyalaya
Hadapsar, Pune- 411028
Affiliated to Savitribai Phule Pune University, Pune



Use of Vermi compost to garden plants



GPS Map Camera



Pune, Maharashtra, India

A.M. College, Subhash Nagar, Hadapsar, Pune, Maharashtra

411028, India

Lat 18.504025°

Long 73.95401°

12/05/23 09:52 AM GMT +05:30



Pune District Education Association's
Annasaheb Magar Mahavidyalaya
Hadapsar, Pune- 411028
Affiliated to Savitribai Phule Pune University, Pune



Effluent treatment plant (ETP)





Pune District Education Association's
Annasaheb Magar Mahavidyalaya
Hadapsar, Pune- 411028
Affiliated to Savitribai Phule Pune University, Pune



Plastic Waste Management

Sr. No.	Particulars
1.	Plastic waste awareness banners are placed in the campus.
2.	Separate plastic bins are placed in the campus.



Pune District Education Association's
Annasaheb Magar Mahavidyalaya
Hadapsar, Pune- 411028
Affiliated to Savitribai Phule Pune University, Pune



Plastic waste awareness banners are placed in the campus





Pune District Education Association's
Annasaheb Magar Mahavidyalaya
Hadapsar, Pune- 411028
Affiliated to Savitribai Phule Pune University, Pune



Separate plastic bins are placed in the campus.





Pune District Education Association's
Annasaheb Magar Mahavidyalaya
Hadapsar, Pune- 411028
Affiliated to Savitribai Phule Pune University, Pune



E- Waste Management

E-Waste Collection Center
Get rid of E-waste!
Donate Here!

FREE COLLECTION Contact Us for Large Size E-Waste Donation.
9146010629/8380043277

REUSE REFURBISH RECYCLE

- MOBILE PHONES
- WEARABLE PHONES
- COMPUTERS MONITORS KEYBOARDS
- LANDFILL
- CHARGERS WIRELESS PERIPHERALS
- WIRELESS CHARGERS
- WIRELESS ATTACHMENTS

EFFECTS OF E-WASTE

HEALTH:
Lung Cancer
Damage to Liver, Kidney
Autoimmune Problems

ENVIRONMENT:
Pollution of Ground Water
Acidification of Soil
Air Pollution

FREE COLLECTION Contact Us for Large Size E-Waste Donation.
9146010629/8380043277

GPS Map of

Pune, Maharashtra, India
94/5, Late Soli Poonawalla Rd, Chaitanya Colony, Hadapsar
Pune, Maharashtra 411028, India
Lat 18.504116°
Long 73.953612°
21/03/22 11:26 AM GMT +05:30

Google



Pune District Education Association's
Annasaheb Magar Mahavidyalaya
Hadapsar, Pune- 411028
Affiliated to Savitribai Phule Pune University, Pune



E- Waste collected from staff and students

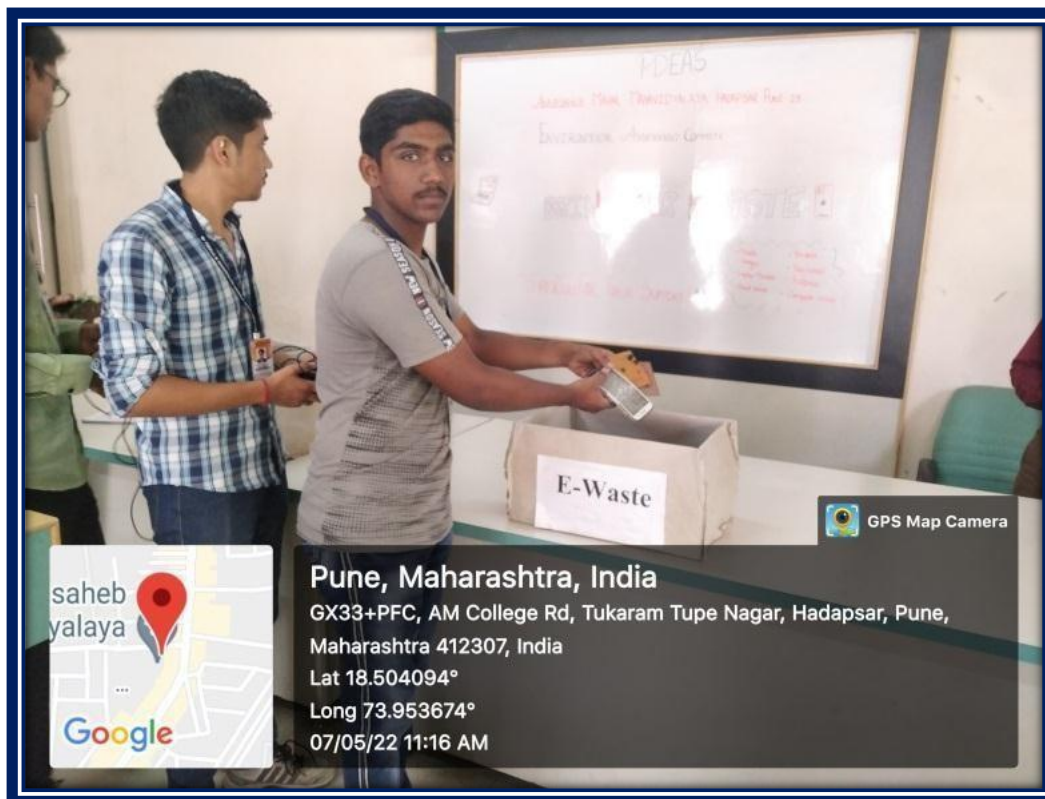




Pune District Education Association's
Annasaheb Magar Mahavidyalaya
Hadapsar, Pune- 411028
Affiliated to Savitribai Phule Pune University, Pune



E- Waste collected from staff and students





Pune District Education Association's
Annasaheb Magar Mahavidyalaya
Hadapsar, Pune- 411028
Affiliated to Savitribai Phule Pune University, Pune



e. Biomedical waste management

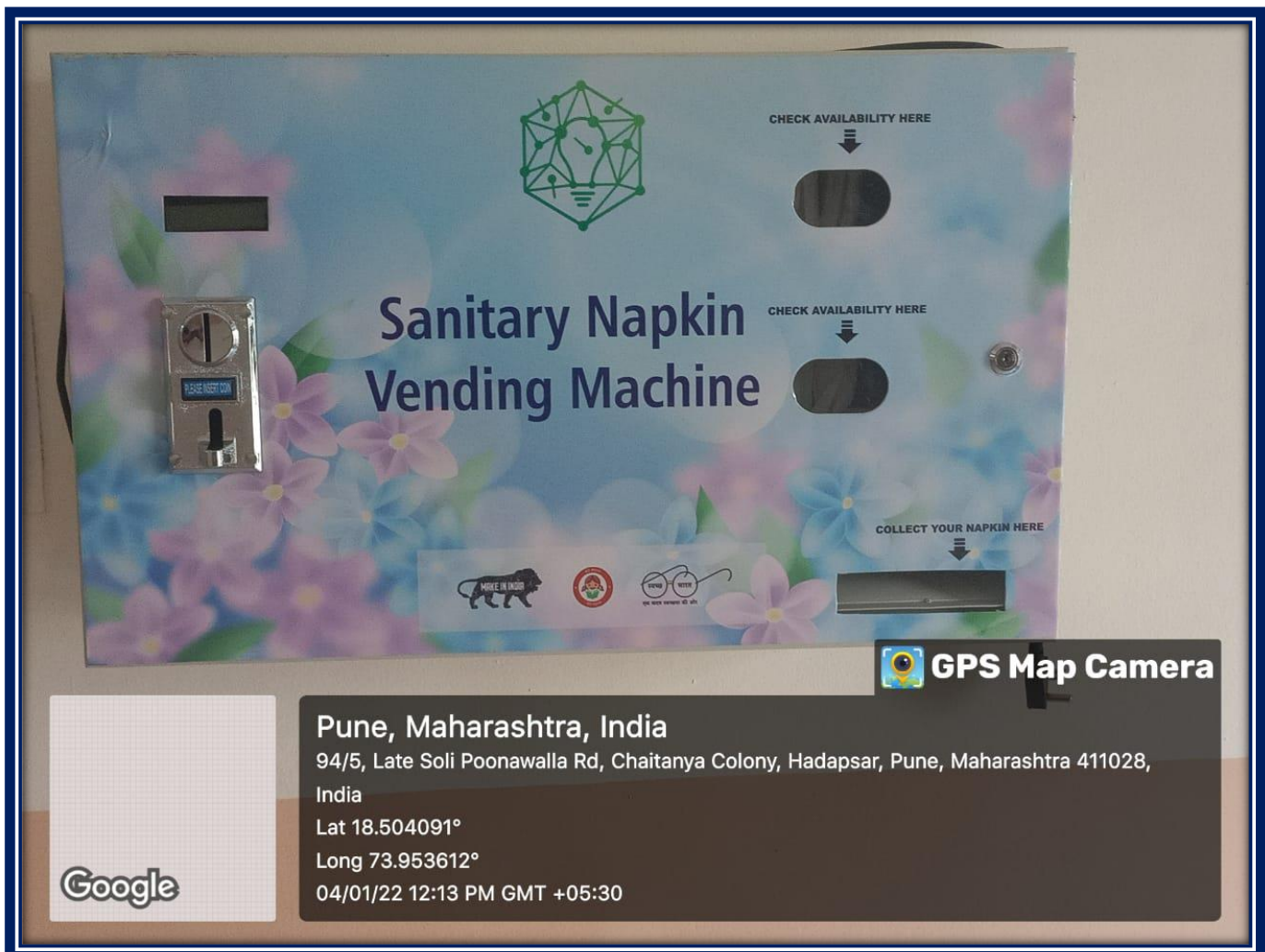
Sr. No.	Particulars
i	Installation of sanitary napkin wending machines in college
ii	Installation of sanitary napkin destroyer machines in college
iii	Installation of sanitary napkin wending machine in college ladies hostel
iv	Use of autoclave for decontaminating the microbial waste



Pune District Education Association's
Annasaheb Magar Mahavidyalaya
Hadapsar, Pune- 411028
Affiliated to Savitribai Phule Pune University, Pune



Sanitary napkin vending machine in college campus

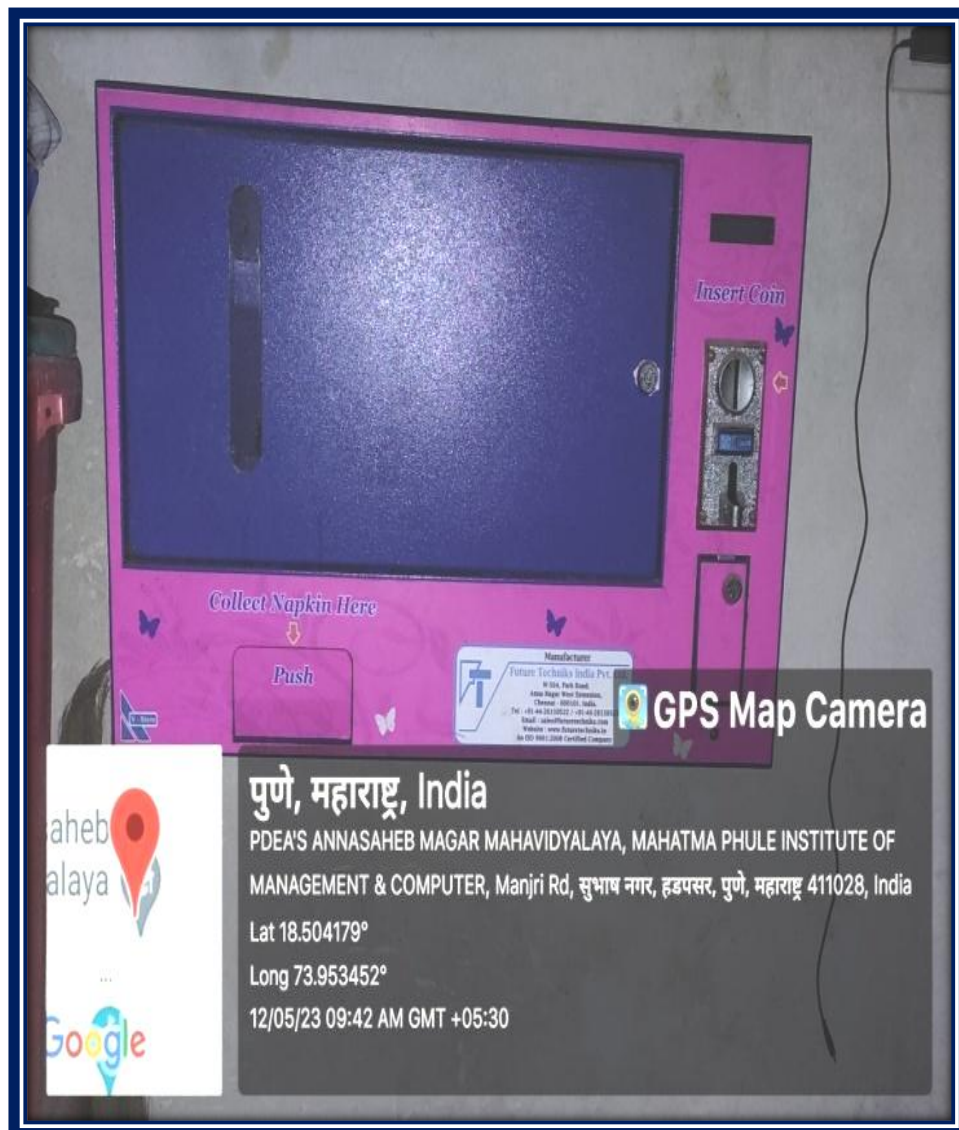




Pune District Education Association's
Annasaheb Magar Mahavidyalaya
Hadapsar, Pune- 411028
Affiliated to Savitribai Phule Pune University, Pune



Sanitary napkin wending machine in college campus

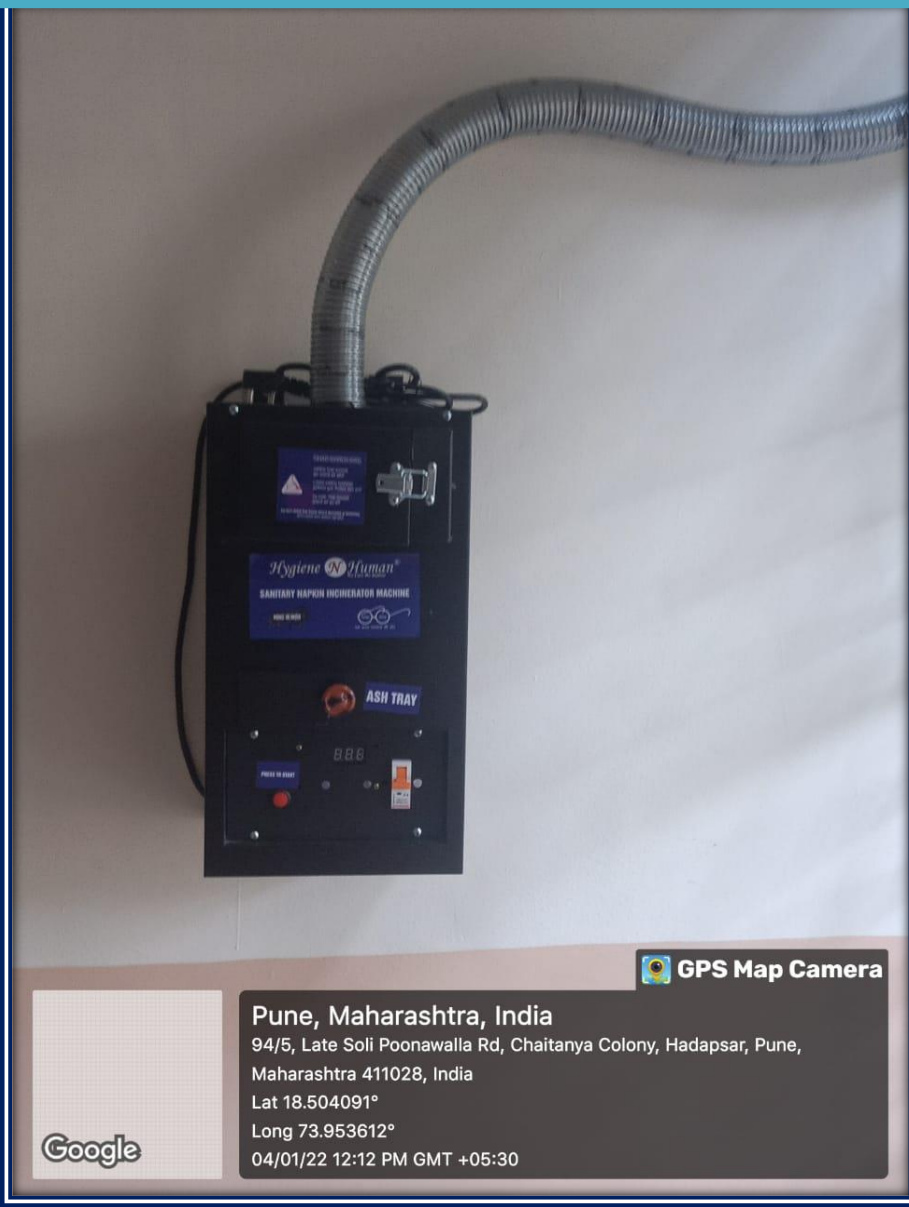




Pune District Education Association's
Annasaheb Magar Mahavidyalaya
Hadapsar, Pune- 411028
Affiliated to Savitribai Phule Pune University, Pune



Sanitary napkin destroyer machine in college campus





Pune District Education Association's
Annasaheb Magar Mahavidyalaya
Hadapsar, Pune- 411028
Affiliated to Savitribai Phule Pune University, Pune



Sanitary napkin destroyer machine in college campus





Pune District Education Association's
Annasaheb Magar Mahavidyalaya
Hadapsar, Pune- 411028
Affiliated to Savitribai Phule Pune University, Pune



Sanitary napkin wending machine in college ladies hostel

Step - 1
Check Stock &
Drop 5 Rs Coin Only
Step - 2 Rotate The Knob Twice
Step - 3
Collect Napkin

Snapyvend
if you like this tell others
if not tell us...

WENEXT
Healthcare India Pvt.Ltd

Add:- S... Opp. Shramjivi Nagar Pathsanstha,
Villavangur, Maharashtra

GPS Map Camera

Pune, Maharashtra, India
94/5, Late Soli Poonawalla Rd, Chaitanya Colony, Hadapsar, Pune,
Maharashtra 411028, India
Lat 18.504116°
Long 73.953612°
29/04/22 01:33 PM GMT +05:30

Google



Pune District Education Association's
Annasaheb Magar Mahavidyalaya
Hadapsar, Pune- 411028
Affiliated to Savitribai Phule Pune University, Pune



Biomedical waste management by Microbiology Department





Pune District Education Association's
Annasaheb Magar Mahavidyalaya
Hadapsar, Pune- 411028
Affiliated to Savitribai Phule Pune University, Pune



Biomedical waste management by Microbiology Department

Decontamination of biomedical waste using autoclave





Pune District Education Association's
Annasaheb Magar Mahavidyalaya
Hadapsar, Pune- 411028
Affiliated to Savitribai Phule Pune University, Pune



Biomedical waste management by Microbiology Department

Biomedical waste ready for disposal

